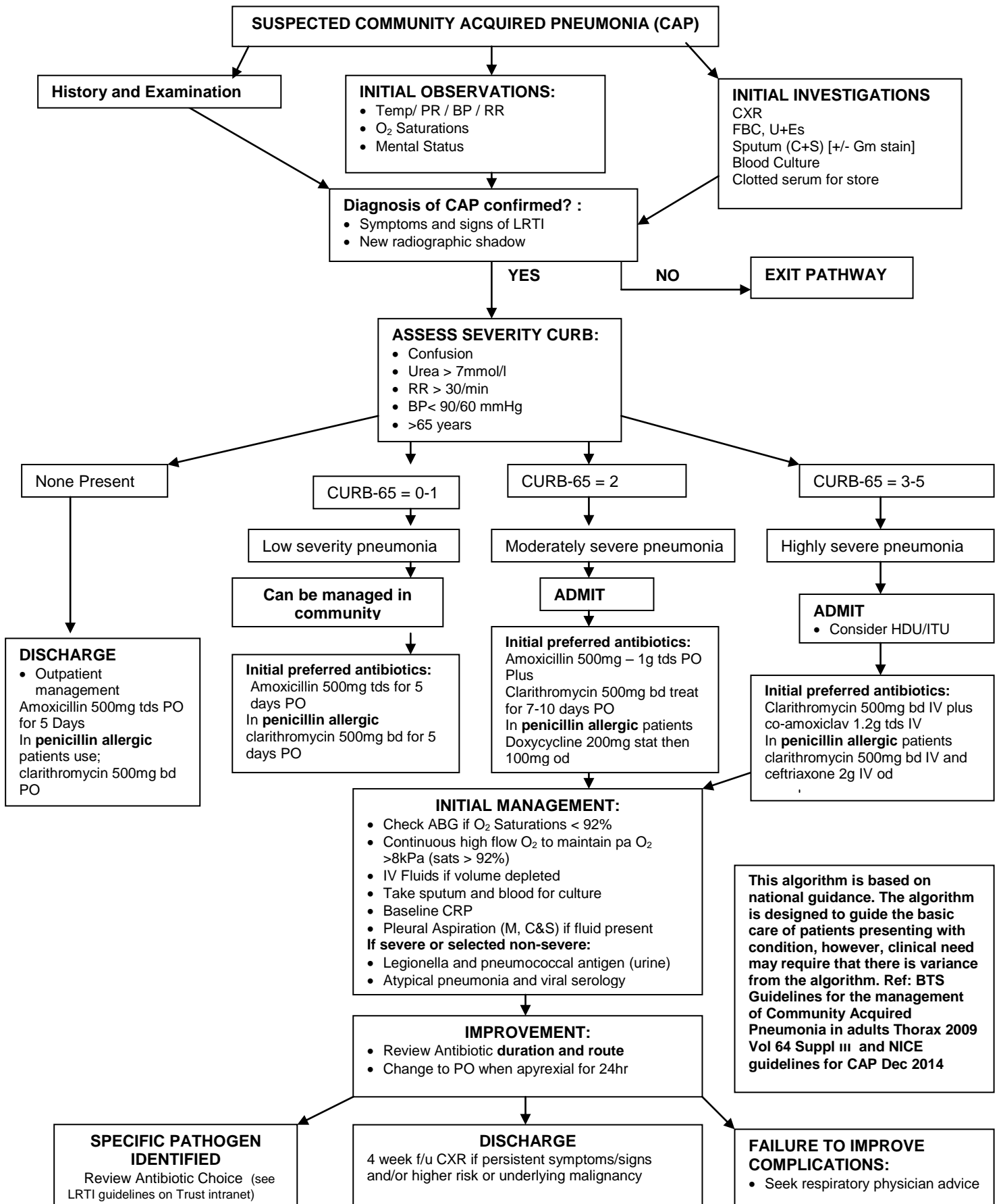


CLINICAL ALGORITHM SUSPECTED COMMUNITY ACQUIRED PNEUMONIA (CAP)



This algorithm is based on national guidance. The algorithm is designed to guide the basic care of patients presenting with condition, however, clinical need may require that there is variance from the algorithm. Ref: BTS Guidelines for the management of Community Acquired Pneumonia in adults Thorax 2009 Vol 64 Suppl III and NICE guidelines for CAP Dec 2014

- Co – amoxiclav must not be given to patients with a penicillin allergy
- Contact Consultant Microbiologist on 7374 (or via switch out of hours) Contact Respiratory Physician on 2179, 2006, 2933

DOCUMENT NAME: CLINICAL ALGORITHM SUSPECTED COMMUNITY ACQUIRED PNEUMONIA (CAP)

APPROVAL DATE:

DATE APPROVED BY AMT:

10.07.17

DATE APPROVED BY NEEMMC:

CONSULTED WITH: Respiratory Consultants and Microbiologists

SUPERSEDES: VERSION 1

REVIEW DATE: JAN 2019

VERSION: 2